



Instructions for Freelancers

The customized eXtyles editorial tools save valuable copyediting time and enhance the accuracy of author-submitted Word documents. This guide provides instructions for working with files that have been styled, edited, and validated by eXtyles.

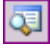
At First Glance

A manuscript that has been run through eXtyles is generally far more orderly — and more colorful! — than a typical author-submitted Word document. Editors working with eXtyled files will immediately notice one or more of the following characteristics:

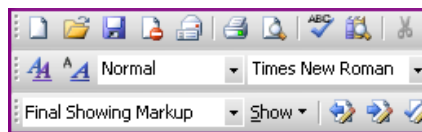
- **Consistent visual formatting:** With eXtyles, Word styles are applied to every paragraph in the document, and each of these styles has a customer-chosen visual format — for example, 1.5 line spacing for body paragraphs, or a large boldface font for article titles.
- **Editorial cleanup:** Extraneous author formatting such as blank paragraphs and double spaces are removed from the file, and many of Word's automatic formatting features that hinder editing, such as auto-numbering of lists, have been turned off. Also, custom find-and-replace rules have been applied to enforce house style — for example, the abbreviation of units of measure, the preferred formatting of figure and table callouts, and so on. In some custom configurations, eXtyles may apply a highlight to ambiguous text to draw the editor's attention to it.
- **Word headers:** Some organizations have eXtyles include information about the file — for example, the publication name, the article type, and the article ID number — in a Word header, which can be seen in the Print Layout view.
- **Tagged, color-coded, annotated, and linked references:** eXtyles identifies reference types, automatically edits journal references, applies color and styling information, links references to online databases like PubMed and CrossRef, and inserts warnings when it detects problems. These processes, and what copyeditors need to know about them, are discussed in detail later in this guide.
- **Color-coded reference citations and object callouts:** The color coding applied by eXtyles to citations, callouts, and references not only aids in proofing but allows eXtyles to identify and match citations to references and callouts to figures, tables, boxes, and equations.
- **Word comments:** Word comments may be scattered throughout the document, identifying problems with citations and references. There are a number of ways to review these comments, depending on the version of Word and the document view used by the editor.

Word Styles

eXtyles makes use of Word styles to identify and format each paragraph in a document. There are two Word tools that are useful for reviewing paragraph styles:

- **Style area width:** In Word Normal view, you can see the styles that have been applied to a document by going to Tools → Options → View. "Style area width" appears at the bottom of the dialog; set it to some nonzero value (0.7 inches is a good starting point) to see the applied paragraph style names in a window to the left of your screen. You can close this window by dragging on the vertical line all the way to the left edge of your Word window.
- **Document Map** : With styled documents, you can easily navigate from heading to heading. To do so, select Document Map from the Word View menu. A pane will open that shows an outline view of the paragraphs to which a title or heading style has been applied. You can quickly traverse the document by clicking on the paragraphs in the pane; you can also use this view to check the accuracy of nested headings. To remove the split-screen view, turn off Document Map in the View menu; you can also use the toolbar icon (shown above) to turn this feature on and off.

The Word styles applied by eXtyles are selected to facilitate each organization's editorial and production workflows; it is critical that they be retained throughout document processing. During editing, you may occasionally need to add or change a paragraph style, which you can do using Word's dropdown style menu (showing the "Normal" style below):



This method, however, can be buggy: Word will occasionally strip face markup like italics or convert special characters like minuses when styles are applied from the dropdown menu. Make a note of any special formatting before you style paragraphs this way; you may have to restore it by hand.

Another more complex problem can arise when Word paragraph styles are applied using the dropdown menu. In some versions of Word (XP and later), character styles linked to specific paragraph styles are automatically generated when a paragraph style is applied to a section of text rather than to an entire paragraph. These character styles can cause problems during composition, and it is difficult to eliminate them without removing the parent paragraph style. **The best way to avoid this problem is to select entire paragraphs when applying paragraph styles. Never apply a Word style with only part of the paragraph selected or by simply placing the cursor within the paragraph.**

Auto-Redact (Find-and-Replace) Results

Many eXtyles customers make use of the Auto-Redact module, which applies customized find-and-replace rules to documents to enforce house style. Auto-Redact reduces the time spent on low-level formatting and editing. Editors working with documents that have been run through Auto-Redact should notice:

- **Style-conformant spelling** — for example, terms converted to their American English variants in a paper authored in British English.
- **Style-conformant formatting** — for example, italics and punctuation added to or removed from Latin terms and abbreviations, statistical terms, and species names; units of measure abbreviated or spelled out; compound terms hyphenated or closed up according to house style.
- **Style conformant usage** — for example, "in order to" replaced with "to," "prior to" replaced with "before."
- **Highlighting** — for example, a highlight added to ambiguous terms that eXtyles cannot convert with 100% accuracy and that require a human eye, like "10 s"; in this case, if the publication's style is to spell out units of time, this may be "10 second interval" (singular) or "10 seconds later" (plural).

The find-and-replace rules are context sensitive and conservative. Spelling changes, for instance, will not be applied to author affiliations, where the spelling of proper names (such as a British "Centre") should be retained, and only typographical changes will apply to references, where the spelling and formatting of terms in journal article and book titles should not be altered.

If you suspect that an Auto-Redact rule has inserted an error into a document, report it to your eXtyles administrator, who will contact Inera; such errors should be rare and can usually be promptly fixed.

Automatic Reference Editing

eXtyles Bibliographic Reference Processing automatically identifies reference types and edits journal references — and, in some configurations, book references — according to your publication's style, regardless of the style (or lack thereof) used by the author. eXtyles can restructure most journal references with near-perfect accuracy. References that are not restructured are visually identified for manual editing.

Each component of the reference is identified and color-coded for easy proofing. The first item is the reference type tag, which specifies the type of reference that eXtyles has identified. Possible types are:

<jrn>	Journal reference
<bok>	Book reference
<edb>	Edited book or book chapter reference
<conf>	Conference proceeding
<eref>	Reference to a web site
<lgl>	Citation of a legal case or statute
<ths>	Reference to a thesis/dissertation
<other>	References to working papers, technical reports, patents, maps, etc.
<unknown>	Unsupported or otherwise unknown reference type

After Reference Cleanup, a typical journal reference looks like this:

<jrn>1. Klingensmith GJ, Garcia SC, Jones HW, Migeon CJ, Blizzard RM.
 Glucocorticoid treatment of girls with congenital adrenal hyperplasia: effects on height,
 sexual maturation, and fertility. J Pediatr 1977;90:996-1004.</jrn>

Full color coding indicates a reference that eXtyles has fully edited. **The only element that eXtyles identifies but does not edit is the article title (in turquoise). Capitalization, spelling, and font face changes in titles must be proofed by an editor.** Everything else in the reference should be automatically restructured according to the style of your publication.

In addition to fixing the order, punctuation, and face markup of reference elements, eXtyles also corrects the abbreviation of journal names so that they match standard abbreviations used for online linking. Punctuation is added or removed as per the publication style.

Reference Processing Queries

If eXtyles discovers reference problems that require editorial follow-up, it inserts queries as Word comments. There are a number of ways to view comments in Word, and the user interface for comments differs in various versions of Word. We recommend that users turn on the Reviewing toolbar in Word for easy access to comment-viewing options. To make this toolbar visible:

1. From the Word **Tools** menu, select **Customize**
2. In the **Customize** dialog, select the **Toolbars** tab
3. Check on the box next to **Reviewing**

In Word XP and Word 2003, often the easiest way to view eXtyles comments in references is by choosing **Print Layout** from the Word **View** menu. In the **Display for Review** window on the Word Reviewing toolbar, select **Final Showing Markup**. The Word comments will appear as marginal balloons in the reference list. Once a comment is resolved, it can be deleted by right-clicking on it and selecting **Delete Comment**.

Book Reference Processing

Some eXtyles configurations include a module that edits both journal and book references. After reference processing, a typical book reference looks like this:

<bok>J. J. Gibson, *The Ecological Approach to Perception* (Erlbaum, London,
 1979).</bok>

A typical book chapter reference looks like this:

<edb>¹⁷D. L. Youngs, in *Numerical Methods for Fluid Dynamics*, edited by K. W.
 Morton and M. J. Baines (Academic Press, London, 1982), Chap. 8.</edb>

As with journal references, each component of the reference is identified and color-coded for easy proofing.

Other Reference Types

Non-journal references are only partially processed. eXtyles identifies the type of non-journal reference, identifies and cleans up the reference number (if present) and the author list, and color codes the year. Non-journal references include not only books but also references that cite conferences, working papers, unpublished theses, etc. The following examples show how typical partially processed references will appear:

<eref>Martin D and Tate N. 1997. Surpop V2.0: introduction. (Online.) Census Dissemination Unit, University of Manchester, Manchester. Available from <http://census.ac.uk/cdu/surpop/> (accessed 3 March 1998).</eref>

<other>³⁰Z. Lin, private communication (Sherwood Int. Fusion Theory Conf., April, 2005).</other>

Authors in references identified by eXtyles as "unknown" are not altered. No other automatic reformatting is done to non-journal references.

General Rule: All non-color-coded reference text must be carefully reviewed and manually edited. Color-coded text should also be reviewed, but in most cases it will not require further editing.

PubMed and CrossRef Reference Linking

Reference Validation

A reference that has been validated against PubMed and CrossRef looks like this:

<jrn>4 Renzi C, Zantedeschi E, Signorelli C, Osborn JF. Factors associated with HIV testing: results from an Italian General Population Survey. *Prev Med* 2001; 32(1): 40–8. [Medline](#) [doi:10.1006/pmed.2000.0778](https://doi.org/10.1006/pmed.2000.0778)</jrn>

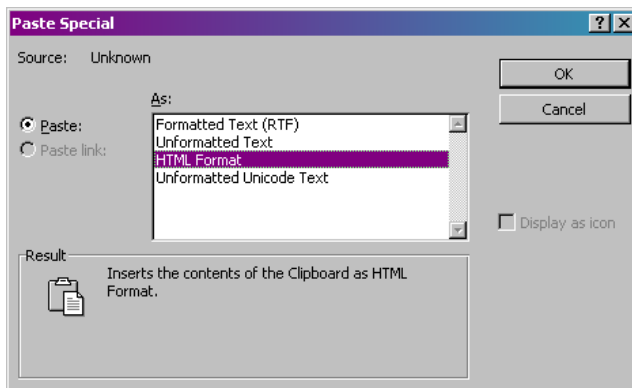
with hyperlinks to the PubMed abstract and the CrossRef DOI inserted at the end of the reference.

A Word Comment is inserted after each reference that fails to match the PubMed database. With this information, the editor can query the author. Alternatively, the editor can resolve the problem by checking directly on the PubMed website (<http://www.ncbi.nlm.nih.gov/entrez/query.fcgi>).

Using PubMed and CrossRef Hyperlinks to Resolve Editorial Errors

Often, a journal reference with missing or incorrect elements will still link to PubMed and/or CrossRef, allowing the editor to quickly and easily retrieve the information. For example, if a reference is missing a volume number, or does not have the appropriate number of authors listed, clicking on the Medline or DOI hyperlink will bring the editor to a web page that contains the information, which can then be copied and pasted into the reference.

To avoid pasting the web page formatting into the Word file, use the Paste Special command found on the Word Edit menu. When the dialog appears...



... select Unformatted Text and click OK; the pasted text will adopt the formatting of the surrounding (i.e., the reference) text.

Citation and Callout Processing

eXtyles performs the following operations on citations and callouts:

- **Conversion and Cleanup:** eXtyles will convert numbered citations set in an incorrect style to the style used by the publication (e.g., numbers in square brackets to superscript numbers); eXtyles will also edit citations to style (e.g., changing "4-7" to "4–7" or "3, 8, 9" to "3,8,9").
- **Matching:** eXtyles checks that all citations have matching references and vice versa, and that all callouts (e.g., to figures) have matching objects (e.g., figure legends) and vice versa.
- **Order Checking:** eXtyles checks that all citations and callouts are listed sequentially in the body of the document. For publications that use Harvard-style (name–date) citations, eXtyles will check the order of callouts only.

If eXtyles encounters problems during these processes, it will insert warnings as Word comments. These problems will need to be resolved by the editor and/or the author. Often these problems relate to out-of-sequence citations. After copyediting is completed, the eXtyles user can then run:

- **Citation Renumbering:** eXtyles renumbers out-of-order citations and renumbers and reorders the corresponding references.

Color

Character Styles

All of the color in an eXtyled document has been applied automatically. These colors correspond to Word character styles, which — like Word paragraph styles — not only format but also identify or "label" the text to which they're applied. Therefore, each of the colors in the reference list has a name assigned to it; if you place your cursor in a reference element, you'll see the character style name in the Word style window of your toolbar: bib_article for the reference title, bib_volume for the reference volume, and so on. Citations (cite_bib) and callouts (e.g., cite_fig) are also automatically styled and color coded by eXtyles.

Reapplying Color Using the Word Style Dropdown List or Format Painter

If, during editing, you remove the color from a citation, callout, or reference element, it can be manually reapplied by selecting the text and choosing the appropriate character style from the Word style dropdown list. You can also use Word's format painter to quickly apply character styles. In the following example:

end of the sentence (15). Beginning of the next sentence (16–19)...

the cite_bib character style has been stripped from citations 16–19 during editing. To reapply, you can place the cursor in citation 15 and click on the Word format painter button. You can then use the mouse to "paint" the character style onto citations 16–19.

Before manually restoring character styles, ask your eXtyles administrator if this is required. He or she may rerun eXtyles reference and citation processes on manuscripts after they've been copyedited, and therefore may not need you to reapply character styles by hand.